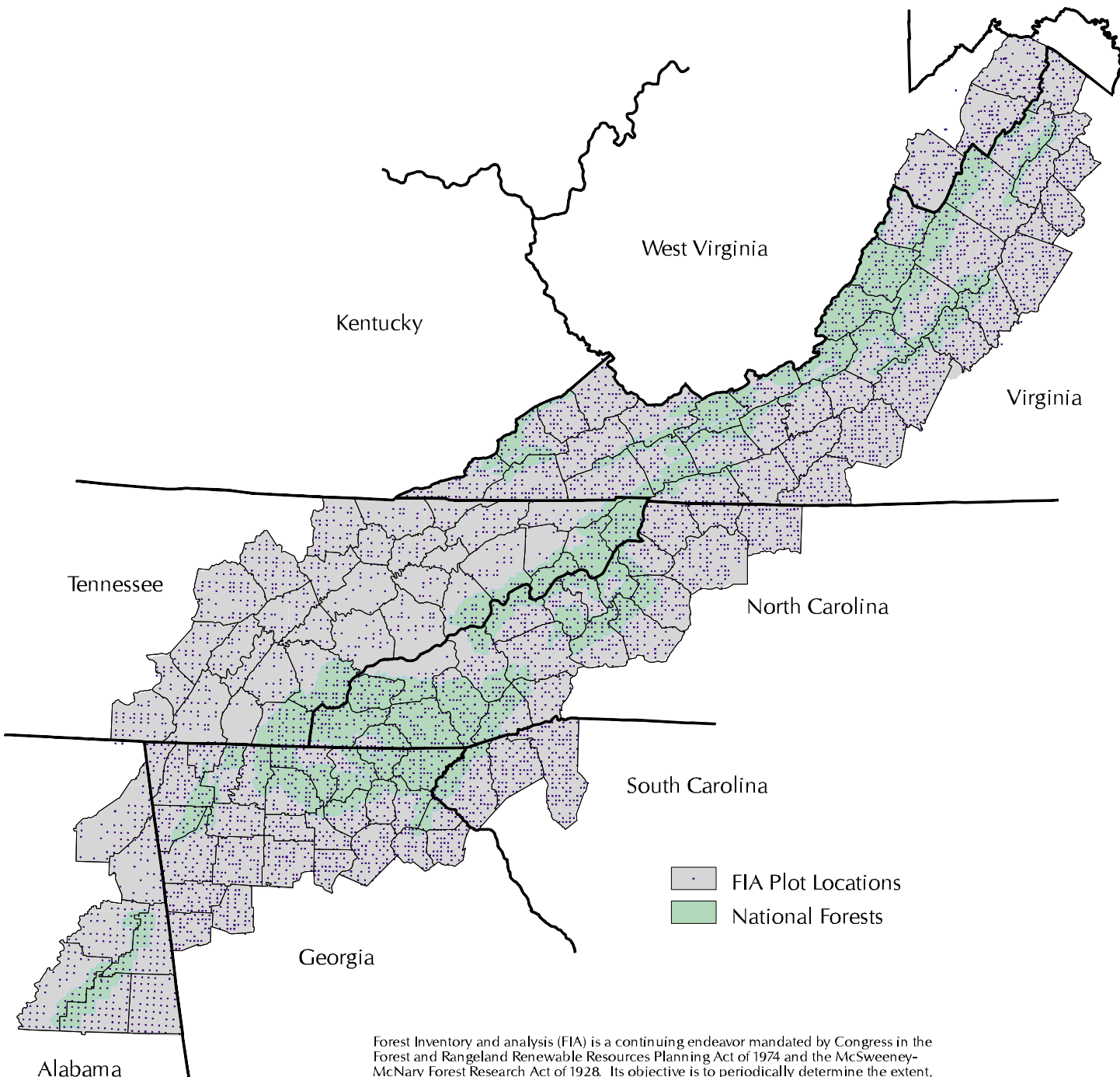


SOUTHERN APPALACHIAN ASSESSMENT

FIA PLOT LOCATIONS



Forest Inventory and analysis (FIA) is a continuing endeavor mandated by Congress in the Forest and Rangeland Renewable Resources Planning Act of 1974 and the McSweeney-McNary Forest Research Act of 1928. Its objective is to periodically determine the extent, condition, and volume of timber, growth, and depletions of the Nation's forest land. USDA Forest Service regional experiment stations are responsible for conducting these inventories and publishing summary reports for individual States. There are 7,160 FIA plots in the Southern Appalachian Assessment Area.

FH030

For information concerning the contents of this graphic, data sources, and/or limitations or caution in interpretation, read the accompanying text file, FH030.txt